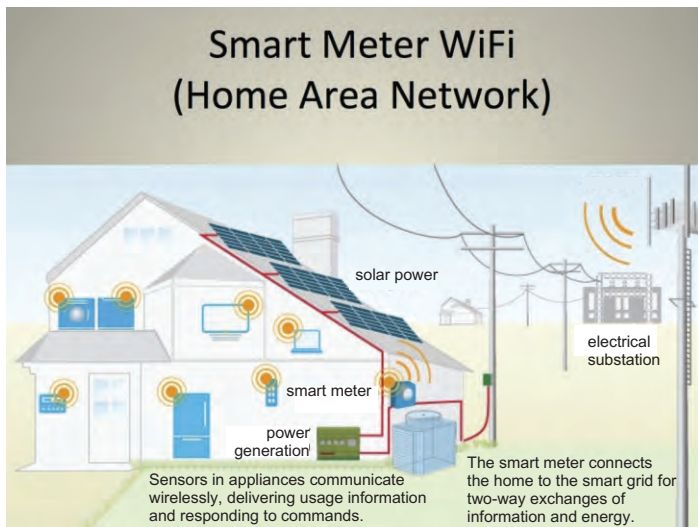


Mythbusting Eversource's "Mythbusters Flyer" + Screening Of Award-Winning Documentary, *Take Back Your Power*, Jan. 12th In Greenfield

By Jonathan Mirin



Eversource is rolling out “smart” meters across Western Massachusetts as you read this. National Grid will follow suit in 2026. If you raise enough questions about the safety of Eversource installing a “smart” meter that has multiple antennas emitting microwave radiation into and from your home to a mesh network of antennas mounted on telephone poles, also all emitting microwave radiation to transmit your personal energy use patterns for permanent storage in data centers, Eversource might provide you with its “Smart Meter Mythbusters” Flyer, presumably to allay your concerns.

They jump right into the deep end with their first two “myths”. Here they are:

Eversource “Myth”: Radio frequency emissions from smart meters are dangerous.

Eversource “Fact”: Smart meters transmit less than one minute per day, with each transmission lasting only milliseconds. When the meter is not transmitting, it’s in idle mode. Smart meters emit a radio frequency comparable to a garage door opener or baby monitor.

Hilltown Health Clarification: Thousands of peer reviewed studies (all underlined items in this announcement are linked at hilltownhealth.org/smartmeter) have demonstrated biological harm from wireless radiation and are linked to increased rates of cancer, Alzheimer’s, electromagnetic radiation syndrome and attention/behavior issues in young people, among others. Saying that smart meters transmit “less than a minute a day” does not address the question of how many times a day the meters emit. Kent Chamberlin, PhD, the national safe tech expert and Past-Chair and Professor Emeritus in the Department of Electrical and Computer Engineering, University of New Hampshire who we brought down to speak in Greenfield (see his talk at hilltownhealth.org) states: “It’s true that if you add up the times of the impulses radiating from the meter, you’ll come with a relatively small number. For example,

a thousand millisecond pulses will only represent a total of one second, but each of those impulses, spread out over a day, can have a significant impact.” Itron is the manufacturer of Eversource’s meters and since each microwave pulse could be as short as 5 milliseconds, the more relevant question is how many times per day the meters emit from each antenna. This number appears to be somewhere between tens and hundreds of thousands times per day (<https://stopsmartmetersbc.com/z/2016-06-15-itron-meters-huge-number-of-signals-daily/>) We have asked how many pulses residents can expect per day and have not yet received a response. A garage door opener and a baby monitor are both voluntary exposures that are typically not 24/7. And the baby monitor manufacturer is not telling customers they have to pay \$34/month to not be exposed to their products microwave radiation. By comparing smart meter radiation to “common” household items, Eversource is attempting to normalize this involuntary exposure. Additionally, studies have shown that the biological harm is combination of signal strength, duration of exposure and the wave form of the frequency - not “just” the signal strength or wattage. Cell tower companies and those seeking to justify wifi in classrooms use the same strategy, comparing emission strength “favorably” to people’s phones, neglecting the fact that phones can be turned off or put in airplane mode while cell towers are 24/7 and children are sitting beneath routers and surrounded by connecting devices for 8 - 9 months a year.

Eversource “Myth”: With their reliance on Wi-Fi, smart meters are vulnerable to cybersecurity threats or data theft.

Eversource “Fact”: Our smart meters do not rely on WiFi. We will use a safe and highly secure, proprietary radio frequency network built specifically for meter reading. Importantly, smart meters are not used to store or transmit any sensitive personal information like your name and address.

Hilltown Health Clarification: Again, this “fact” is a kind of misdirection. The 900 MHZ antenna emitting from a smart meter “does not rely” on wifi (it is not the same frequency as wifi but still relies on a frequency that causes biological harm). The “wifi” antenna, separate from the 900 MHZ antenna, is designed to connect with your “smart” appliances and broadcast that information to Eversource who will consume yet more energy to transmit it and store it. We are told by Eversource that this wifi antenna will be an “opt in” option for ratepayers. But if no one is told that there are privacy, surveillance, health and hacking risks, why would they say no to the utility’s opt-in proposition?

Reserve your seat for a screening plus Q&A of the award winning documentary about smart meters “*Take Back Your Power*” at Greenfield Public Library on Monday, January 12 @ 6 pm, learn how to file a complaint with the Department of Public Utilities, discover why people who opt out are not getting the “non-advanced” meter Eversource is supposed to provide, and join our state congressional delegation in support of H 3551 to advocate for the no-fee opt out bill @ hilltownhealth.org

Say you saw it in *West County Shopper!*